



Technical Bulletin / Safety Alert

Unique ID No: GEN2011-TBSA-03 **Rev:** 0

Subject: Brumby QICS Inspection for Wear & Damage

Date: 7/06/2011

Applicable to: VLI Brumby Machines Fitted With Lift Arm & Quick Implement Connection System (QICS) & Attachments

Note: Minimum PPE required to carry out any inspections contained in this TBSA shall be protective clothing & footwear, safety glasses, hearing protection & any site specific requirements. A JSA or equivalent should be carried out prior to performing these tasks.

Introduction:

Valley Longwall International Diesel Division (VLIDD) would like to introduce the availability of Brumby QICS inspection gauges and information to provide assistance when inspecting implements for damage and wear.

<i>Part Description</i>	<i>Part No.</i>
Implement Inspection Gauge	5-12170701
QICS Plate Inspection Gauge	5-12170702

Inspection Information:

Before inspecting for wear, it is important to inspect the QICS plate and implement for obvious signs of deformation, deterioration and cracks, particularly the welds in the engagement and retention areas of the QICS plate and corresponding implements. Where cracks or crack indications are identified, it is recommended to complete a thorough non-destructive examination and repair as necessary.

Inspection of the QICS plate and corresponding implements is shown in the following series of photographs.

Visual inspection of the QICS plate and corresponding implements is recommended to occur on a 50hr or weekly frequency.

Inspection for wear, using gauges is recommended to occur on a 250hr or monthly frequency.



Figure 1: Inspect all welds and plates for indications of cracks and signs of damage, deterioration and wear. Pay particular attention to engagement retention areas and tongue engagement position.



Maximum Gap 10mm



Maximum Gap 15mm

Figure 2: Implement Inspection Gauge Part No. 5-12170701



Figure 3: Implement Inspection Gauge Part No. 5-12170701 can also be used to assess for wear to the QICS tongue engagement location.

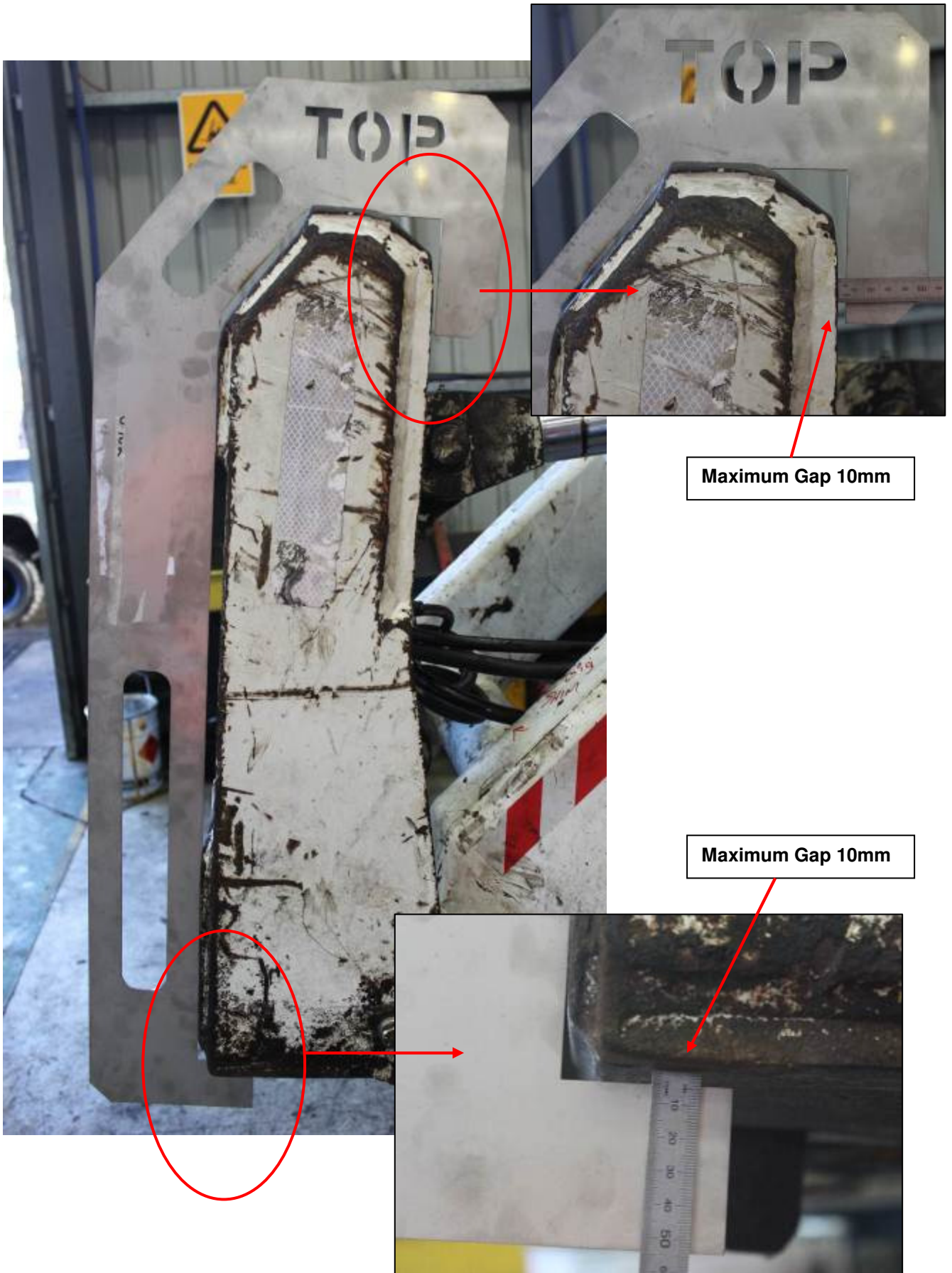


Figure 4: QICS Plate Inspection Gauge Part No. 5-12170702



Inspect all welds and plates for evidence of crack indications damage and deterioration.

Ensure full engagement of the tongue is possible using the lower portion of the gauge as a guide.

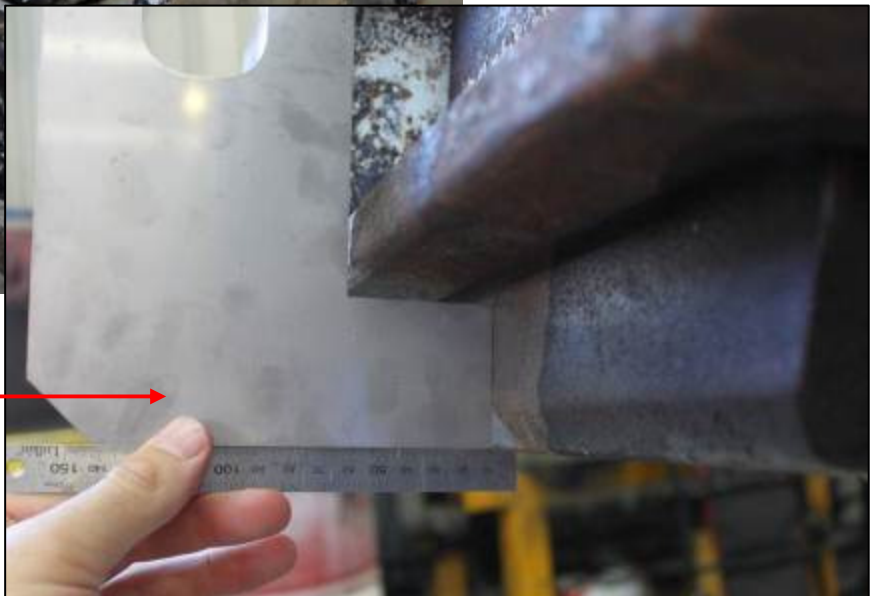


Figure 5: Checking QICS Tongue Extension using Gauge Part No. 5-12170702

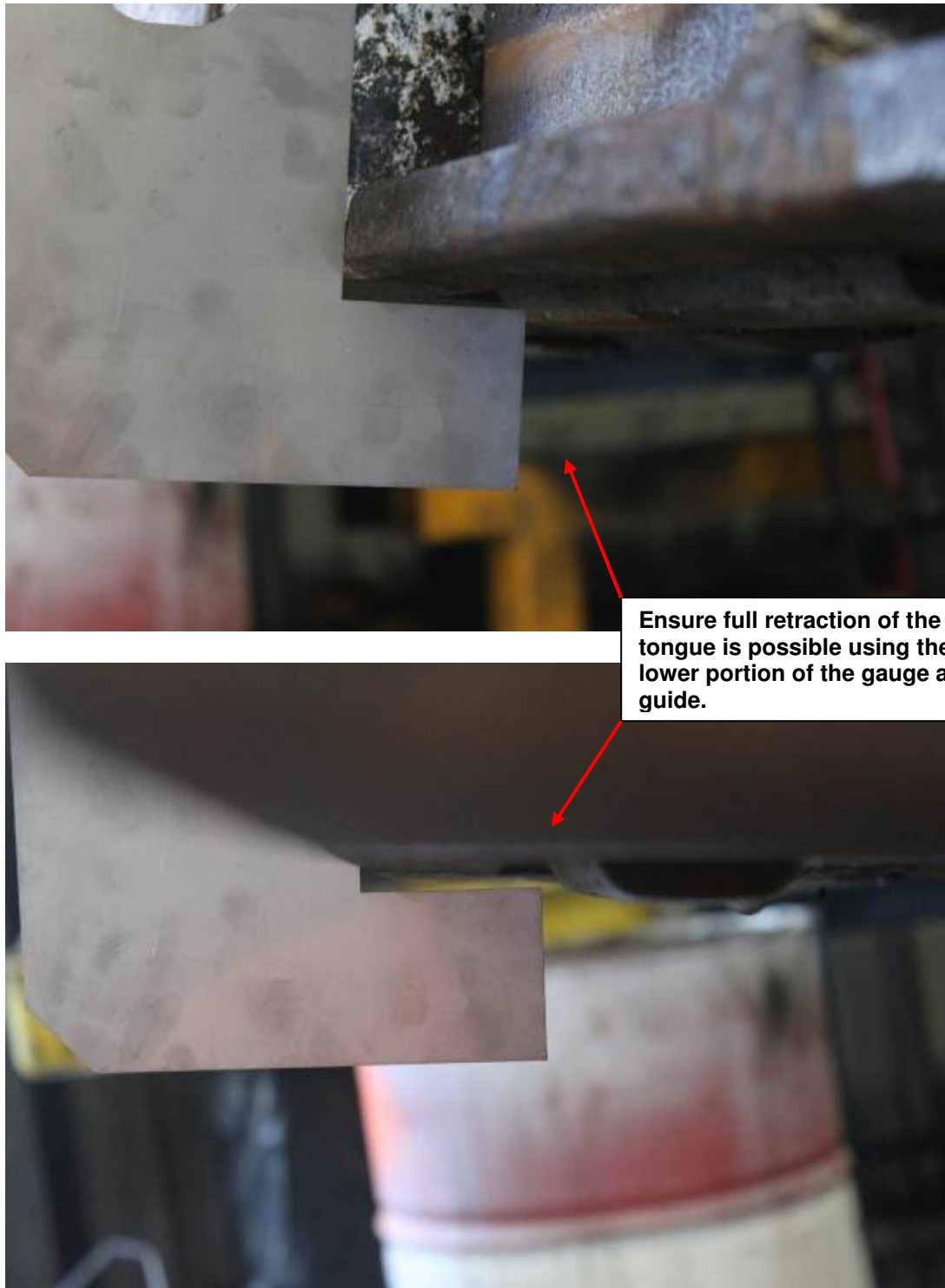


Figure 6: Checking QICS Tongue Retraction using Gauge Part No. 5-12170702

Please ensure this document is circulated to all relevant personnel within your organisation. Should you have any further queries please contact your VLI Diesel Representative.

Tomago Operation
28 Old Punt Road
Tomago NSW 2322
P: +61 2 4913 7500
F: +61 2 4964 8919

Rutherford Operation
20 Shipley Drive
Rutherford NSW 2320
P: +61 2 4015 3200
F: +61 2 4932 1722

Mackay Operation
6 Fursden Street
Glenella QLD 4740
P: +61 7 4942 7495
F: +61 7 4942 4944

Emerald Operation
44 Industrial Drive
Emerald QLD 4720
P: +61 7 4987 5011
F: +61 7 4987 4711