



Technical Bulletin / Safety Alert

Unique ID No: TBS2010-TBSA-02

Rev: 3

Subject: Driftrunner, Brumby and Ranger Brake Pedal Assembly Modification

Date: 17/11/2010

Applicable to: All Driftrunner, Brumby and Ranger machines

Note: Minimum PPE required to carry out any inspections contained in this TBSA shall be protective clothing & footwear, safety glasses, hearing protection & any site specific requirements. A JSA or equivalent should be carried out prior to performing these tasks.

Occurance:

It has recently become evident that OEM modifications to the Driftrunner, Brumby and Ranger Brake Pedal Assembly have not been consistently carried out prior to store dispatch. The potential exist that unmodified pedal assemblies have been received and put into service by end users. The modification requires the existing split pin and pivot pin to be removed and replaced by a 3/8 x 4 1/2 inch stainless steel bolt, nyloc nut and washers and ensure the main body is painted.

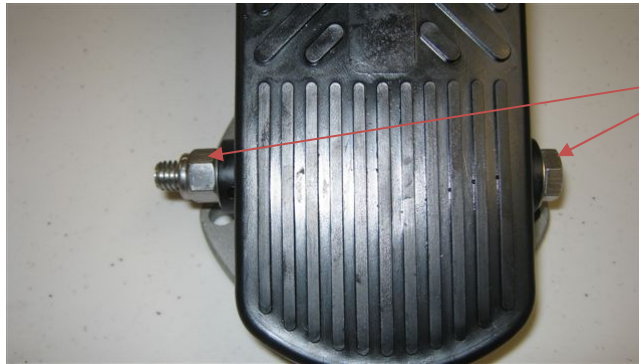
Immediate Action:

Inspect all Driftrunner, Brumby and Ranger Brake Pedal Assemblies to ensure that they have the 3/8 x 4 1/2 inch stainless steel bolt, nyloc nut and washers fitted (Part No: 9-04291601) and ensure main body is painted.

- Driftrunner Brake Pedal Assemblies (Part No: 5-04080104)
- Brumby Brake Pedal Assemblies (Part No: 5-04080105)
- Ranger Brake Pedal Assemblies (Part No: 5-04080104)
- Stainless steel bolt, nyloc nut and washers (Part No: 9-04291601)



Remove original
split pin and
pivot pin



Install 3/8 x 4 1/2
inch stainless steel
bolt, nyloc nut
and washers
Part No:
9-04291601

Future Action:

VLI Diesel to implement a procedure to ensure all Driftrunner, Brumby and Ranger Brake Pedal Assemblies are fitted with the 3/8 x 4 1/2 inch stainless steel bolt, nyloc nut and washers and ensure main body is painted at time of being received into the store and prior to being sold.

Conclusion:

1. Inspections are to be carried out on all minesite Driftrunner, Brumby and Ranger Brake Pedal Assemblies to ensure that the 3/8 x 4 1/2 inch bolt and nyloc nut is fitted and ensure main body is painted.
2. Inspections are to be carried out on all VLI Diesel store stock to ensure that the 3/8 x 4 1/2 inch bolt, nyloc nut and washers are fitted and ensure main body is painted.

Please ensure this document is circulated to all relevant personnel within your organisation.

Should you have any further queries please contact your VLI Diesel Representative.

Tomago Operation
28 Old Punt Road
Tomago NSW 2322
P: +61 2 4913 7500
F: +61 2 4964 8919

Rutherford Operation
20 Shipley Drive
Rutherford NSW 2320
P: +61 2 4015 3200
F: +61 2 4932 1722

Mackay Operation
6 Fursden Street
Glenella QLD 4740
P: +61 7 4942 7495
F: +61 7 4942 4944

Emerald Operation
25 Hawkins Place
Emerald QLD 4720
P: +61 7 4987 5011
F: +61 7 4987 4711