

SAFETY BULLETIN

Ref Document No.	SB14002	Issue No.	1
Subject	Cap Screw Failures		
Release Date	30 May 2014		

Purpose

To advise COALTRAM® owners of possibly faulty socket head cap screws installed in ExDES components.

Applicability

COALTRAM® LHGW854 at BHP Westcliff and LH6040 at Centennial Newstan.

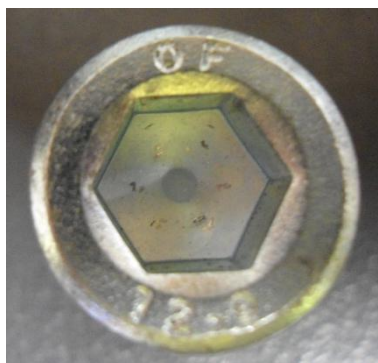
Background

M10 x 1.5 x 25 socket head cap screws were installed in the head to exhaust adaptor plate, exhaust manifold and turbo adaptor plate on two separate vehicles at PPK's workshop. The following day the heads of some of the cap screws holding these components on had broken off without the engine being started.

Investigation /Findings

An investigation was carried out with the following findings:

- The cap screws were installed by a different person for each machine.
- The cap screws had been tensioned correctly.
- The tension wrench calibration was tested and deemed to be within tolerance.
- Not all cap screws installed failed. The ones that failed all had the same markings on the head which was different to those that had not failed.
- Failed bolts had "OF" stamped on head.



- The failed bolts were traced to an order and batch of bolts delivered to

PPK 30/03/14.

- Bolts were quarantined and removed from any COALTRAM® in the workshop.
- Audit completed to determine which COALTRAMS® could be affected by faulty bolts.
- COALTRAM® owners contacted.

Recommendations

1. COALTRAM® LHGW854 at Westcliff and LH6040 at Newstan need to be checked for faulty cap screws at the first available convenience. This will require checking the exhaust manifold, removal of the catalyst to check the turbo adaptor plate and removal of the exhaust manifold to check the exhaust manifold adaptor plate.
2. If cap screws are found with the same head markings as the failed cap screws they should be replaced. If none are found the engine may be re-assembled.

PPK Technical Department

PPK Mining Equipment Pty Ltd

T: +612 4964 5400

13B Old Punt Rd,
Tomago, NSW, 2322

PO Box 339

HRMC, NSW, 2310