

# ENGINEERING BULLETIN

Ref Document No.	EB13005	Issue No.	1
Subject	Front Drive Shaft Loop		
Release Date	11 <sup>th</sup> November 2013		

**Purpose** – Advise machine owner’s potential areas of improvement.

**Applicability** – All in service COALTRAM® models – CT08

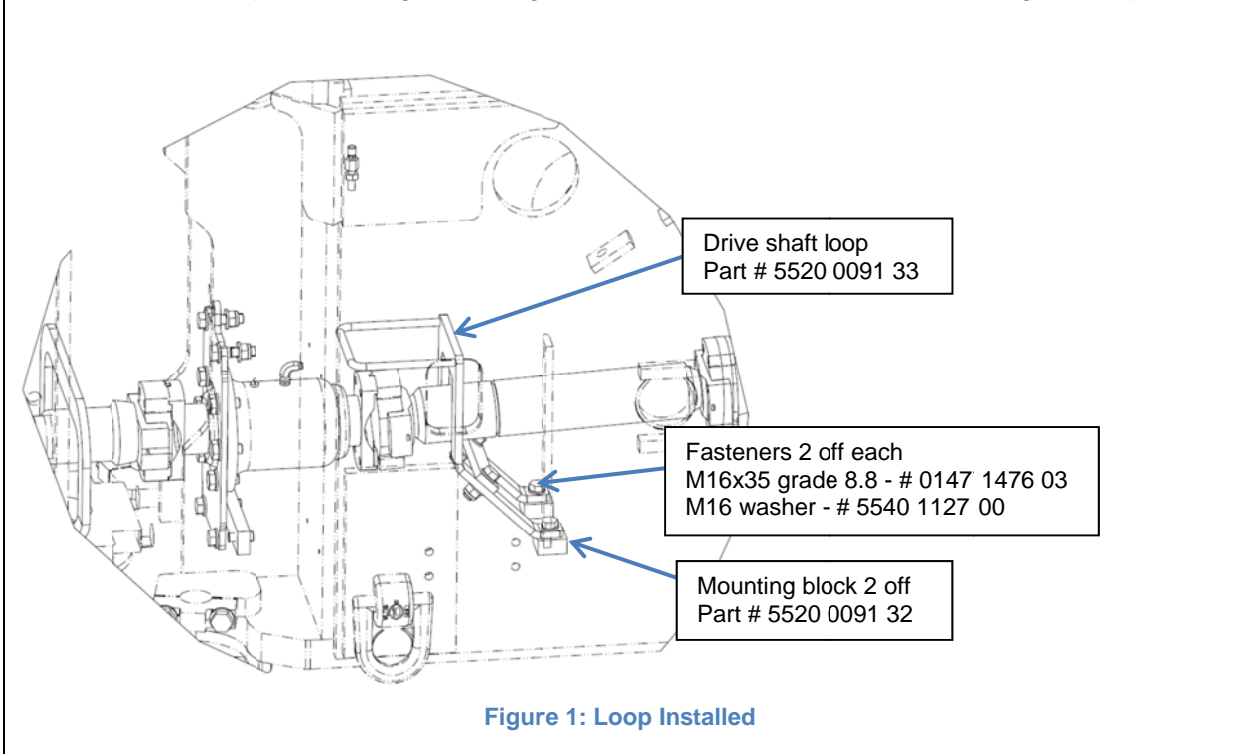
**Background**

Unlike other driveshafts on the CT08 the front driveshaft does not have a protective loop to retain the shaft in the event of a failure. DMS has also been made aware of instances where hydraulic hoses in the vicinity driveline coupling rub on the coupling with the possibility of wearing through the hose.

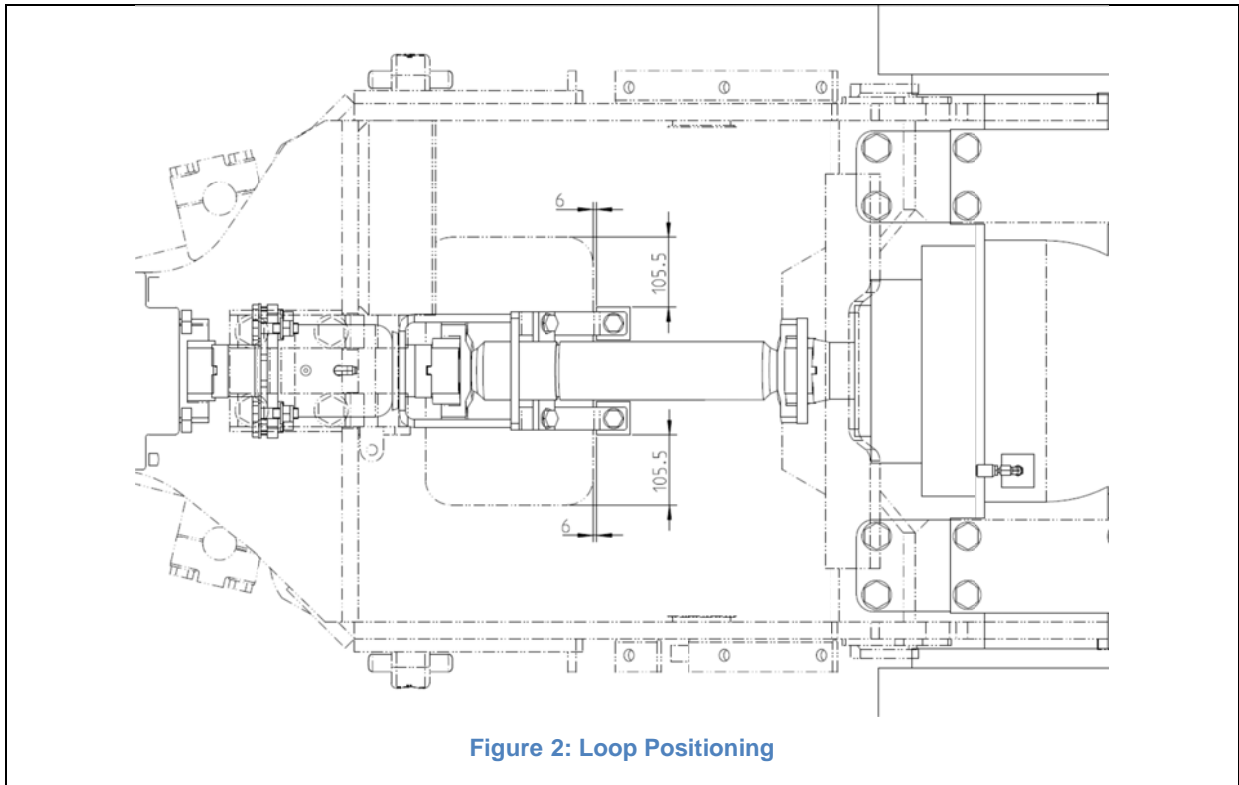
**Investigations/Findings**

DMS has developed a front drive shaft loop that will retain the end of the driveshaft if a failure was to occur and provide coverage of the driveline coupling.

Installation will require welding mounting blocks to the load frame for mounting the loop.



**Figure 1: Loop Installed**



### Recommendations

1. It is recommended to install the front drive shaft loop if a mine site is having issues with wear to hydraulic hoses surrounding the front drive shaft coupling. Installing the half loop will also retain the driveshaft if a failure occurs limiting the damage that may transpire.
2. The component will be available from January 2014.

Brett Neal  
Manager – Technical Support & Service Centres