

SAFETY BULLETIN

Ref Document No.	SB23001	Issue No.	1
Subject	COALTRAM® CT08/CT10LP Crowd Cylinder Failures		
Release Date	16 th August 2023		

Purpose

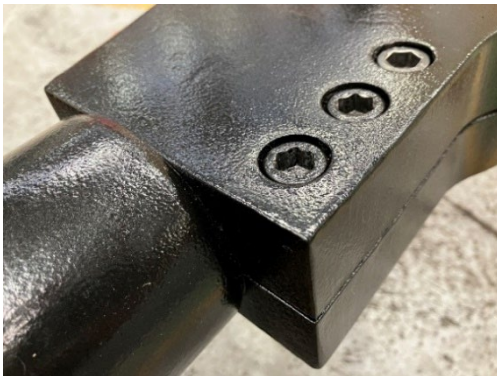
To notify owners and operators of failures of crowd cylinders.

Applicability

COALTRAM® CT08 and CT10LP model crowd cylinders Part No. - 5520003190

Background

The crowd cylinder on CT08 and CT10LP models utilises a split clevis rod eye design. The cylinder rod has a threaded end, which mates with a female thread in the rod eye. The rod eye has a split clevis design, which clamps the rod using three M12 grade 12.9 bolts.



PPK Mining Equipment have received reports of two incidents where the crowd cylinder clevis eye has separated from the cylinder rod end during normal operation.

Investigation /Findings

Investigations are ongoing, however early inspections indicate that in at least one case the rod had unwound from the clevis before losing engagement and separating from the rod eye.

Recommendations

1. It is recommended that all applicable crowd cylinders be inspected to ensure there are no visible signs the cylinder rod has moved in relation to the clevis. The clevis end wall must be seated firmly against the crowd cylinder rod end shoulder, with no gap.
2. Inspect all the clevis clamp bolts are in place and secure with no visible signs of movement.
3. If any signs of movement between the clevis end wall and cylinder rod shoulder are found, it is recommended that the cylinder be removed from service for repair or replacement and PPK Mining Equipment be contacted.

Engineering Department

PPK Mining Equipment Pty Ltd

E: bulletins@ppkme.com.au

T: +612 4964 5400

www.ppkme.com.au