



Technical Bulletin / Safety Alert

Unique ID No: GEN2012-TBSA-02

Rev: 0

(This document supersedes all previous versions of the above TBSA – N/A)

Subject: Driftrunner Steering Valve Installation

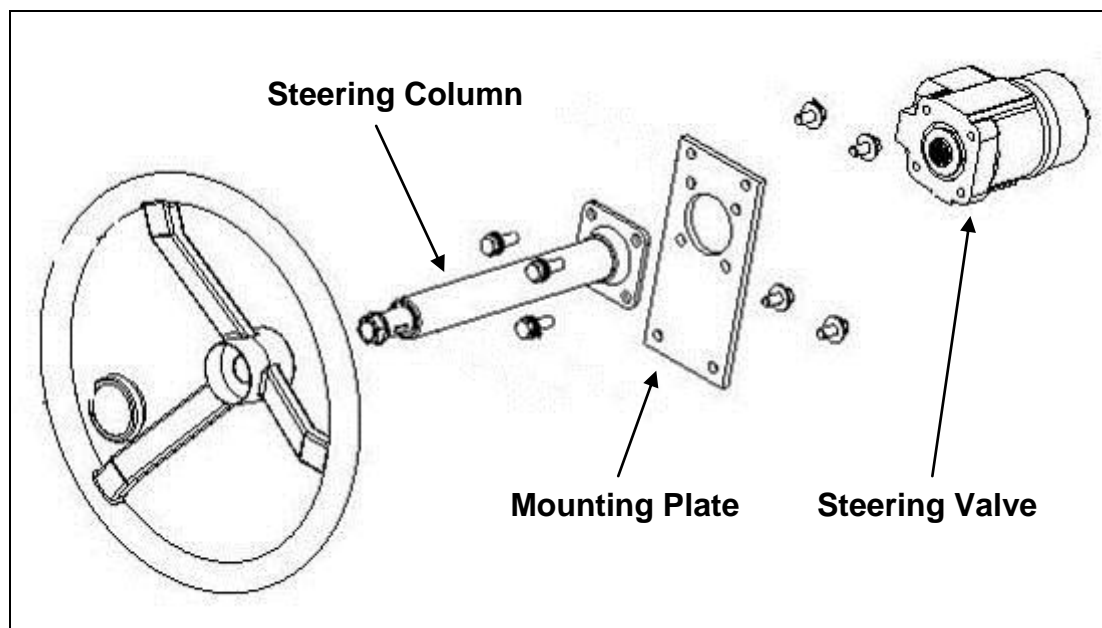
Date: 24th July 2012

Applicable to: All VLI Driftrunner Vehicles

Note: Minimum PPE required to carry out any inspections contained in this TBSA shall be protective clothing & footwear, safety glasses, hearing protection & any site specific requirements. A JSA or equivalent should be carried out prior to performing these tasks.

Occurance:

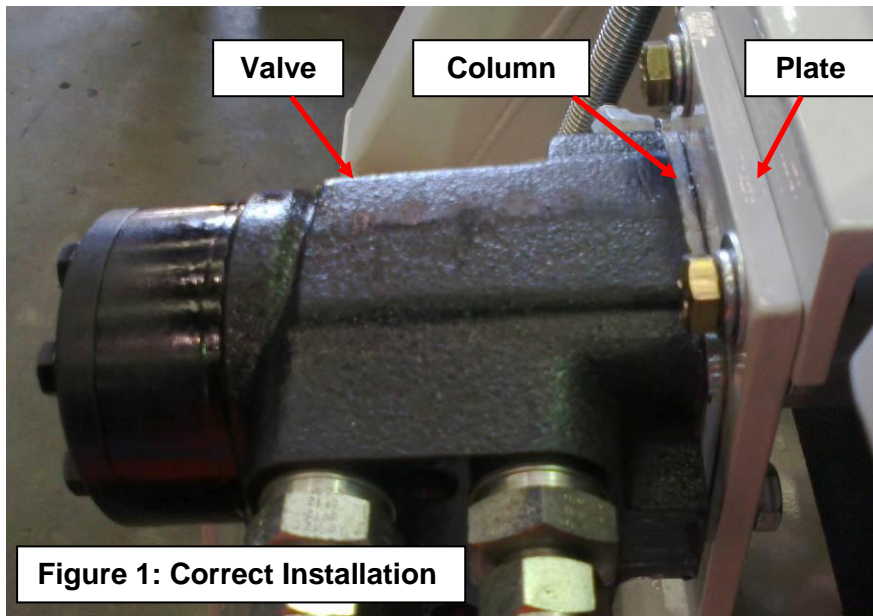
VLI Diesel Pty Ltd advises equipment owners and end users of a manufacturing installation issue affecting the Steering Column to Steering Valve assembly on recently manufactured Driftrunner vehicles.



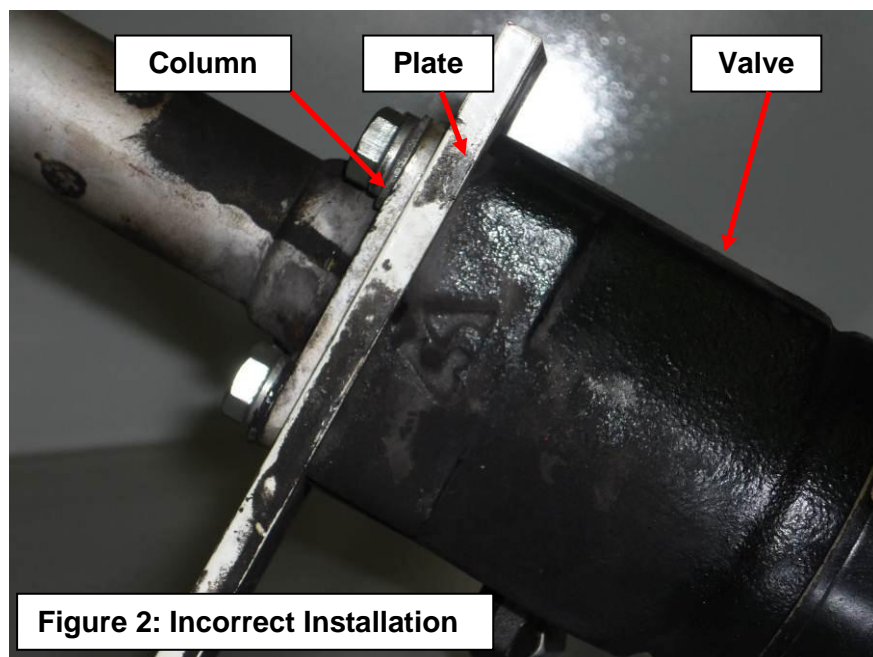
Investigation & Cause:

It has been identified that on some Driftrunner Vehicles, the steering column installation to the steering valve has been incorrect.

The steering column is to be mounted directly to the steering valve, and then to the mount plate, as shown below in Figure 1.



The incorrect method of mounting the steering column to the steering valve is shown in Figure 2, where the mounting plate has been placed between the steering column and the steering valve. This installation method reduces the length of engagement of the steering column pinion to the steering valve gear, potentially affecting the steering response of the vehicle.



Recommendations:

End users should immediately inspect all Driftrunner vehicles to verify correct steering valve installation.

Vehicles with incorrect installations should be removed from service immediately and installation corrected.

Please advise VLI Diesel Pty Ltd of any non-conforming steering valve installations identified.

Immediate Action:

VLI Diesel has inspected all existing production and service workshops to confirm steering valve installation conformance.

End users to immediately inspect Driftrunner vehicles as per above recommendations.

Future Action:

VLI Diesel Pty Ltd is conducting an internal investigation to identify and rectify the root cause of this manufacturing installation error.

Please ensure this document is circulated to all relevant personnel within your organisation.

Should you have any further queries please contact your VLI Diesel Representative.

Tomago Operation
28 Old Punt Road
Tomago NSW 2322
P: +61 2 4913 7500
F: +61 2 4964 8919

Rutherford Operation
20 Shipley Drive
Rutherford NSW 2320
P: +61 2 4015 3200
F: +61 2 4932 1722

Mackay Operation
6 Fursden Street
Glenella QLD 4740
P: +61 7 4942 7495
F: +61 7 4942 4944

Emerald Operation
44 Industrial Drive
Emerald QLD 4720
P: +61 7 4987 5011
F: +61 7 4987 4711