

ENGINEERING BULLETIN

Ref Document No.	EB18006	Issue No.	1
Subject	TBS Brake Pedal Update		
Release Date	27 th November 2018		

Purpose – Advise COALTRAM® owners/operators of an update to the pressure setting of the valve in the brake pedal (PPK Part Number 5580003985).

Applicability – All in service COALTRAM® models operating under any of the following Transport Braking System (TBS) design registrations:

- MDR 085906 TBS
- MDR 085906 TBS-2
- MDR 085906 TBS-4
- MDR 085906 TBS-4a
- MDR 085906 TBS-4b

Background

Existing 5580003985 brake pedals have a brake release valve pressure setting of 1500±50 psi.

It was found that some in-service brake valves were not supplying enough pressure to fully release the brakes on braked trailers requiring a minimum release pressure of 1500 psi.

It was determined that increasing the brake release pressure to a 1600±50 psi setting would be sufficient to ensure that these trailer brakes are fully released.

Component review and in-system testing were performed to ensure that this component change would have negligible effect on the function and safety of existing Transport Braking Systems in the field.

This component change does not adversely affect health and safety, and the system fit, form and function remain consistent with the above listed TBS design registrations.

Recommendations

Owners and operators of applicable Transport Braking Systems should be aware that **new** 5580003985 brake pedals will be supplied with a nominal **1600±50** psi valve pressure setting.

In-service brake pedal valves are still fit for purpose, provided that the conditions of the machine TBS are met (including braked trailer combinations) and recommended maintenance is being performed.

Because of the increased operating pressure, existing brake release pressure gauges will need to be upgraded when a new brake pedal valve is installed. The revised gauges will show a revised acceptable pressure range. This will allow easy identification of systems with the new brake release valve setting.

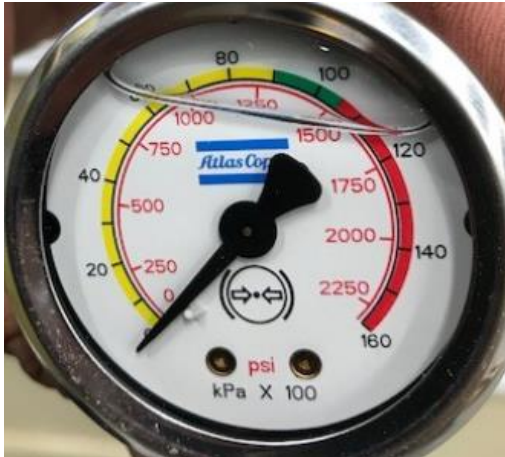


Figure 1 - Existing Gauge Label

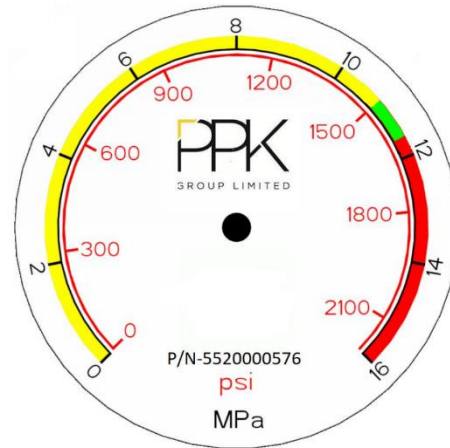


Figure 2 - New Gauge Label

Engineering Department
PPK Mining Equipment Pty Ltd
T: +612 4964 5400
www.ppkgroup.com.au