

SAFETY BULLETIN

COALTRAM® CT08 AND CT10

Transmission cover not latched securely leading to injury

Ref Document No.	SB13001	Issue No.	1
Release Date	04 April 2013		

Purpose

To advise machine owners of a possible hazard that exists while having the transmission cover and alternator cover opened simultaneously.

Applicability

COALTRAM® CT08 and CT10 vehicles

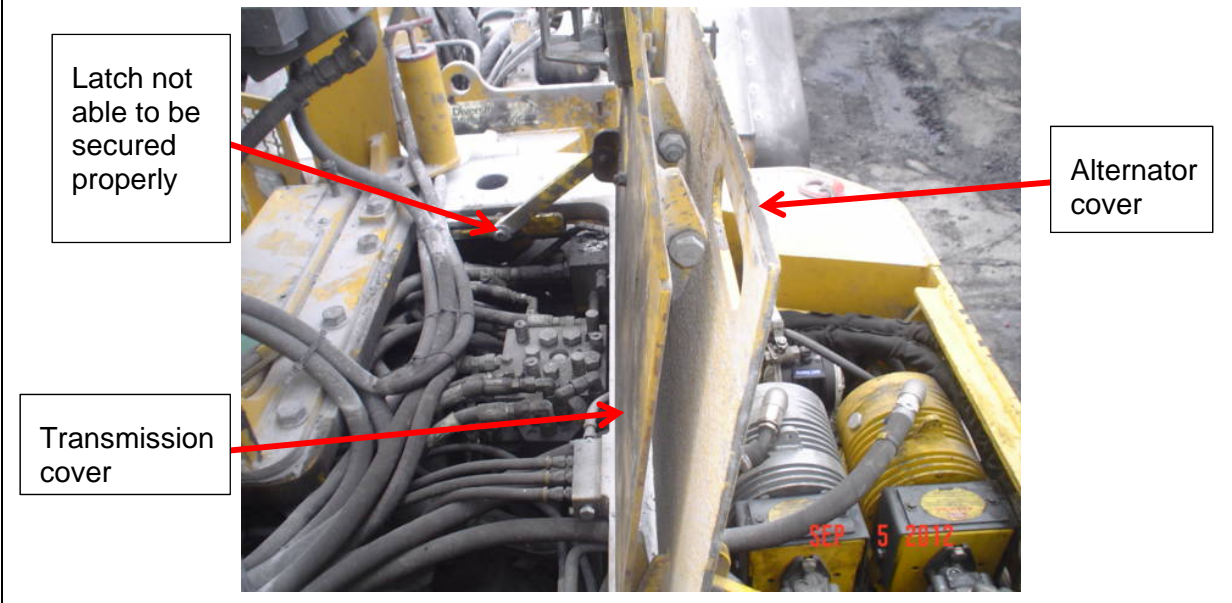
Background

An incident occurred which resulted in a worker sustaining a hand injury after the transmission cover closed inadvertently as it was not latched while in the open position.

Investigation /Findings

It was revealed that when the alternator cover is raised and latched in position, the transmission cover is able to rise past vertical and rest against the alternator cover however cannot be securely latched in place.

In order to unlatch, either of these covers, they must first be taken past the vertical position and then lowered. In this particular incident, both covers were open, the alternator cover latched and the transmission cover resting against it. The alternator cover was then moved in order to be closed, which required it being taken past the vertical position. Subsequently the transmission cover which was resting on the alternator cover was moved past its vertical axis and fell closed. This action caused the fingers of an adjacent worker to be struck and an injury was sustained.



Recommendations

It is recommended to shorten the transmission cover latch (Part No. 5575701153) by 50mm in order to allow the cover to be securely latched when the alternator cover is in the open position. This will enable personnel to correctly latch the cover in the open as it removes the need to travel over centre. Refer Figure 1 below for details of modified latch.



Transmission cover latch

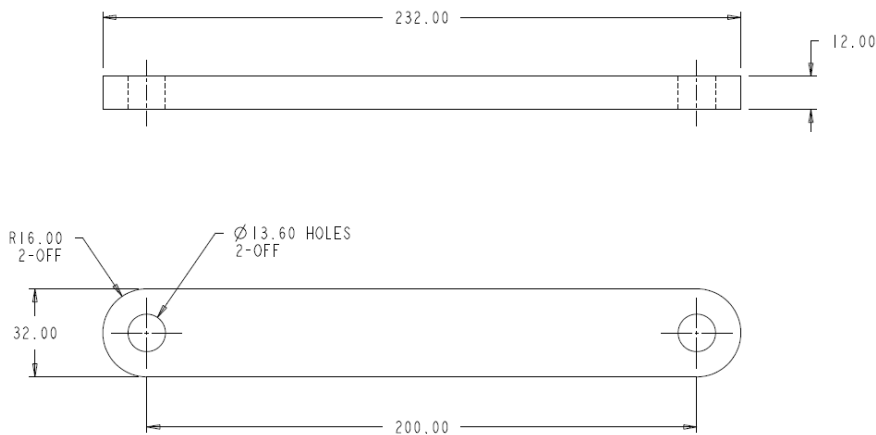


Figure 1. Modified latch details

Dominic Posavec

Dominic Posavec
General Manager – Engineering & Design